

The solution for all cavities

The Tetric® Line

Modern composites
in tried-and-tested quality



The solution for all cavities^[1]

The Tetric® Line is comprised of four coordinated composites for direct restorative treatment. It combines tried-and-tested quality with modern technology.

Four composite materials are all you need for an efficient restorative workflow in all cavity classes^[1]. The products are coordinated with each other and can be used in different combinations (consistency and shade). They are available in a kit.



True-to-nature esthetics

Tetric® Prime and Tetric EvoFlow® allow you to create beautiful natural-looking restorations in anterior teeth. The 4-mm composites Tetric PowerFill and Tetric PowerFlow provide true-to-nature esthetics in the posterior region.



730 million restorations^[2]

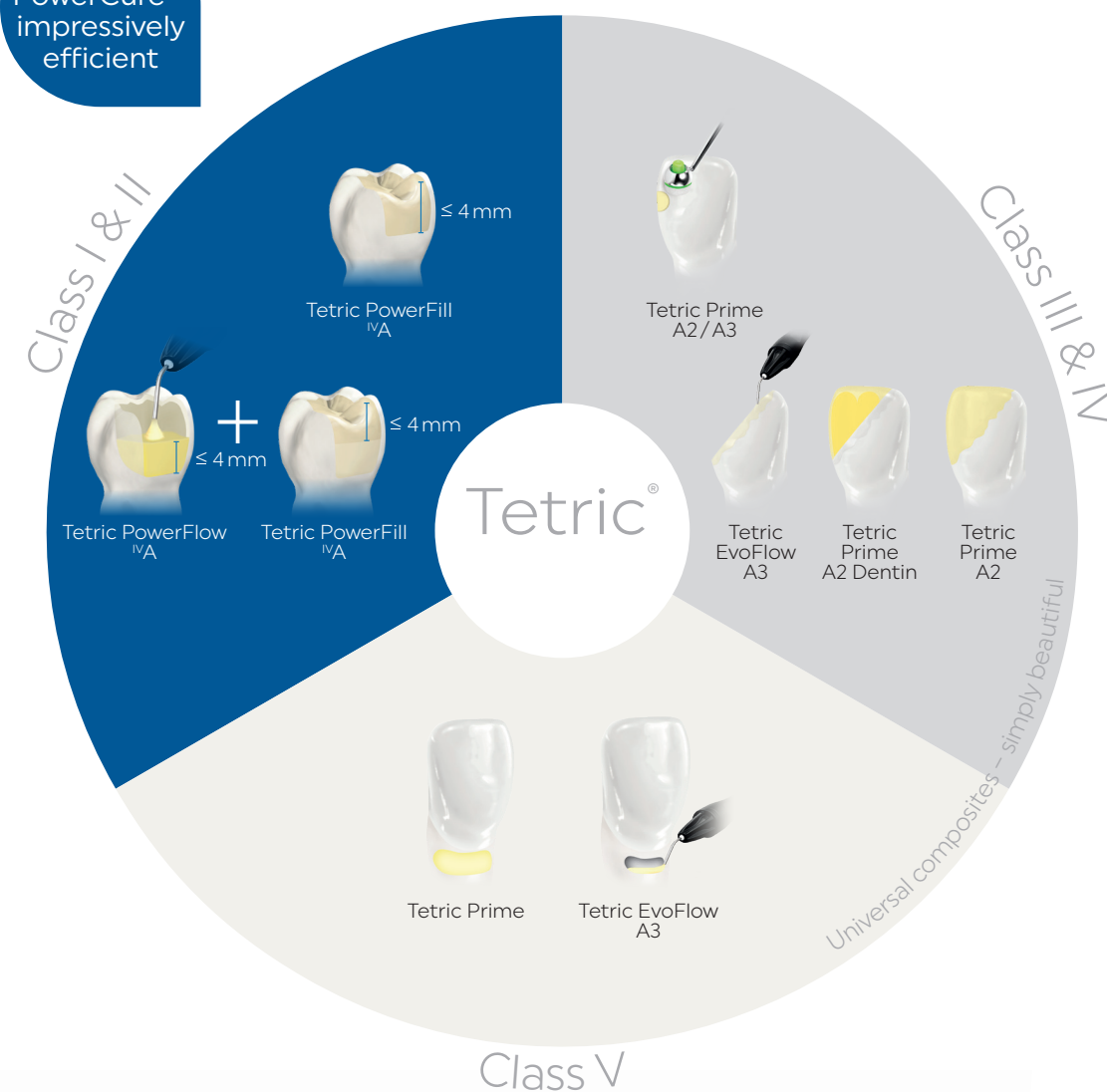
The Tetric line of products is based on Tetric EvoCeram, which has been successfully used in clinical practice for more than 15 years. It offers you tried-and-tested quality based on long-standing expertise. More than 730 million restorations have been placed



Time savings of up to 51%

Each of the four composite resins offers product properties that support efficient treatment procedures. When used in combination with Adhese® Universal and Bluephase® PowerCure, the 4-mm composites allow for time savings of up to 51% in conjunction with light exposure times of 3 seconds^[3].

3s
PowerCure –
impressively
efficient



[1] Cavity classes I–V according to G. V. Black
 [2] Based on the worldwide sales figures for the Tetric family of products
 [3] Only suitable for Class I & II restorations in posterior teeth light-cured from the occlusal aspect.

Tetric Prime for excellent handling

Tetric Prime is a sculptable universal composite for the anterior and posterior region.

Because of the material's pronounced chameleon effect and excellent handling properties, it is particularly suitable for rebuilding lost tooth structure in the highly visible anterior region. In most cases, you will need to apply only one shade-matched material to achieve a lifelike esthetic result.

Esthetics – Quality – Effi-

- ✓ Natural shade blend due to the pronounced chameleon effect
- ✓ Universally applicable enamel shades for small defects and direct veneers
- ✓ Dentin shades showing low translucency for restoring large defects and fulfilling high esthetic expectations
- ✓ Low susceptibility to fracture due to high flexural strength ^[4]
- ✓ Easy to contour as a result of low stickiness, good spreadability and creamy consistency
- ✓ Efficient polishability for a lustrous surface
- ✓ Easy to distinguish on X-rays due to high radiopacity

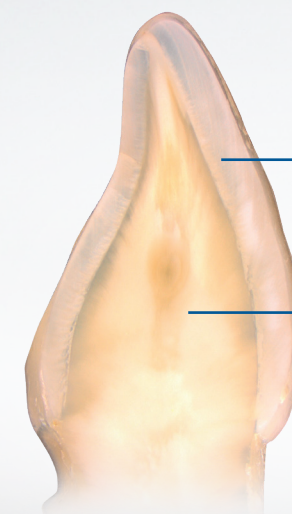
[4] According to ISO 4049

How does natural shade blend work?

As a result of the special monomer and filler blend of our universal composites, the materials are capable of adapting their light-optical properties to those of the surrounding tooth structure.

Have a look! [ivoclar.com/chameleon-effect](https://www.ivoclar.com/chameleon-effect)

Excellent handling



Universal enamel shade showing an enamel-like translucency of 11.5%

Optional dentin shades featuring a dentin-like translucency of 7% for large defects

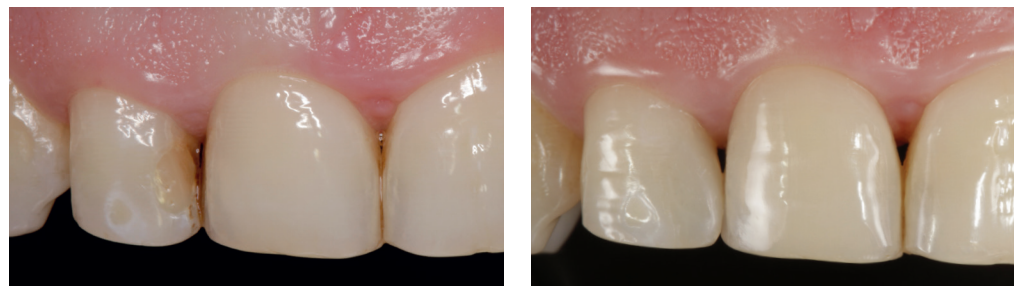
Tetric EvoFlow for precise application

Tetric EvoFlow is a flowable universal composite for the anterior and posterior region.

Tetric EvoFlow, like Tetric Prime, is characterized by its pronounced chameleon effect and excellent handling properties. Tetric EvoFlow can be applied precisely and is therefore suitable for creating minimally invasive anterior restorations and for use as a liner.

Anterior restoration

placed with Tetric EvoFlow A2 Dentin and Tetric Prime A2



Preoperative situation: Inadequate mesio-palatal composite restoration in tooth 12

Final situation

Source: Dr Carola Pentelescu, Ivoclar Vivadent, Liechtenstein

Esthetics – Quality – Efficiency

- ✓ Natural shade blend due to the pronounced chameleon effect
- ✓ Universally applicable enamel shades for small defects and cervical restorations
- ✓ Dentin shades featuring low translucency for concealing stains and for fulfilling demanding esthetic expectations
- ✓ Low susceptibility to fracture due to high flexural strength ^[5]
- ✓ Can be used as a liner in combination with Tetric Prime
- ✓ Easy to distinguish on X-rays due to high radiopacity
- ✓ Efficient and easily polishable

[5] According to ISO 4049

Tetric EvoFlow has a thixotropic consistency

It is flowable under pressure, yet it remains stable when handled. Therefore, it enables you to work with high precision. This characteristic allows the product to adapt closely in narrow and thinly tapering areas. The product remains in place where it has been applied.

Have a look!
ivoclar.com/thixotropy



Tetric PowerFlow for fast volume replacement

Tetric PowerFlow is a flowable 4-mm composite for true-to-nature esthetic results in the posterior region.

Tetric PowerFlow, which is characterized by low shrinkage, optimum flexural strength^[6] and reliable depth of cure, shows impressive clinical performance. As a result of its great adaptation to cavity walls, the product is suitable for the efficient treatment of deep cavities.

We recommend using Tetric PowerFlow in combination with Tetric PowerFill. It can also be used together with Tetric Prime.

Esthetics – Quality – Efficiency

- ✓ True-to-nature esthetics for posterior restorations due to Ivocerin^[7,8] and Aessencio Technology
- ✓ Reliable curing of increments of up to 4 mm in thickness
- ✓ Low susceptibility to process-related air entrapment
- ✓ Great adaptation to cavity walls and easy handling because of outstanding flow properties
- ✓ Effective combination with Tetric PowerFill and Tetric Prime
- ✓ Easy to distinguish on X-rays due to high radiopacity

[6] According to ISO 4049

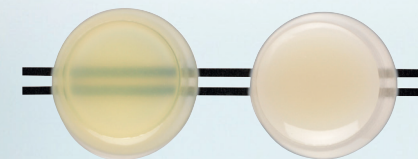
[7] Ganster B et al., New photocleavable structures, 4. Acylgermane-based photoinitiator for visible light-curing, Macromolecular Rapid Commun. 2008, 29, 57-62.

[8] Ganster B et al., New photocleavable structures, Diacylgerman-based photoinitiator for visible lightcuring, Macromolecules 2008, 41, 2394-2400

Patented light initiator Ivocerin^[7,8] and Aessencio Technology

Ivocerin ensures a reliable depth of cure of composite layers of up to 4 mm. The Aessencio Technology is responsible for gradually increasing the opacity of the initially translucent 4-mm composites during the light polymerization process. Ultimately, the materials attain the translucency levels of enamel and dentin and therefore assume a true-to-nature esthetic appearance.

Have a look! ivoclar.com/aessencio-technology



Tetric PowerFlow before and after polymerization

Short
light exposure
times from
3 seconds



Tetric PowerFill for easy contouring

Tetric PowerFill is a sculptable 4-mm composite for true-to-nature esthetic results in the posterior region.

Similar to Tetric PowerFlow, Tetric PowerFill is characterized by reliable depth of cure, low shrinkage and optimum flexural strength^[9]. In short: The clinical performance of Tetric PowerFill is just as impressive and the results are just as esthetic^[10] as those achieved with conventional composites. The low stickiness of Tetric PowerFill facilitates the creation of anatomical structures.

Esthetics – Quality – Efficiency

- ✓ True-to-nature esthetics for posterior restorations due to Ivocerin^[11,12] and Aessencio Technology
- ✓ Excellent margin quality in combination with Adhese Universal
- ✓ Reliable depth of cure of increments of up to 4 mm in thickness
- ✓ Low susceptibility to process-related air entrapments^[13]
- ✓ Easy creation of anatomical structures because of low stickiness
- ✓ Easy to distinguish on X-rays due to high radiopacity
- ✓ Effective combination with Tetric PowerFlow



Posterior tooth restoration made with Tetric PowerFlow and Tetric PowerFill

The images speak for themselves. Even when they are applied in layers of up to 4 mm, Tetric PowerFlow and Tetric PowerFill are capable of achieving highly esthetic results in posterior teeth.



Short
light exposure
times from
3 seconds

[9] According to ISO 4049

[10] In the posterior region

[11] Ganster B et al., New photocleavable structures, 4. Acylgermane-based photoinitiator for visible lightcuring, Macromolecular Rapid Commun. 2008, 29, 57-62.

[12] Ganster B et al., New photocleavable structures, Diacylgerman-based photo-initiator for visible lightcuring, Macromolecules 2008, 41, 2394-2400.

[13] Hirata R, Effect of sonic resin composite delivery on void formation assessed by micro-computed tomography, Operative Dentistry 2018, 43-2, 144-150, additional data on file.

Time savings of up to 51% for you and your patients

Tetric PowerFill and Tetric PowerFlow will increase the efficiency of your workflow.

Fewer treatment steps due to 4-mm increments

Compared with conventional filling techniques, you can restore cavities of up to 4 mm in depth with just one increment. In cavities with a depth of more than 4 mm you can apply increments of up to 4 mm in thickness. Fewer increments means having to switch less between the composite, the modelling instrument and the light-curing device.



Light exposure times from 3 seconds

Products	Light intensity (mW/cm ²)	Exposure time	
All composites of the Tetric Line	500–900	20 s	
All composites of the Tetric Line	1,000–1,300	10 s	e. g. Bluephase G4
All composites of the Tetric Line	1,800–2,200	5 s	e. g. Bluephase PowerCure
Tetric PowerFill and PowerFlow	2,700–3,300	3 s ^[14]	e. g. Bluephase PowerCure

[14] Only suitable for Class I & II restorations in posterior teeth light-cured from the occlusal aspect.

3s PowerCure products for saving time

Reduce your treatment time in the posterior region by up to 51% with our 3s PowerCure products. Light-cure Adhese Universal, Tetric PowerFill and Tetric PowerFlow in just 3 seconds using the 3sCure mode^[14]. Shorter light exposure times mean more time for yourself and less stress and discomfort for your patients.

Learn more about this topic by consulting our Scientific Documentation:
ivoclar.com/3s-powercure/scientific-doc



Delivery forms

Tetric EvoFlow

Shade	Syringe (1x2g)	Cavifil (20x0.20g)
A1	595953US	595987US
A2	595954US	595988US
A3	595955US	595989US
A3.5	595956WW	595990WW
A4	595978WW	595992WW
B1	641358WW	641348WW
B3	595957WW	7595991WW
A2 Dentin	641360WW	641349WW
A3.5 Dentin	595980WW	595994WW
B2 Dentin	641361WW	641350WW
T	595979US	595993US
Bleach L	595982WW	595996WW
Bleach M	595984WW	596008WW
Bleach XL	595981WW	595995WW

Tetric Prime

Shade	Syringe (1x3g)	Cavifil (20x0.25g)
A1	706607WW	706563US
A2	706608WW	706564US
A3	706609WW	706585US
A3.5	706610WW	706586US
A4	706611WW	706587US
B1	706612WW	706588US
B2	706613WW	706589US
C2	706615WW	706591US
A2 Dentin	706618WW	706594US
A3.5 Dentin	706619WW	706595US
T	706621WW	706597US
Bleach L	706622WW	706598US

Tetric PowerFill

Shade	Syringe (1x3g)	Cavifil (20x0.2g)
IVA	668083WW	668107WW
IVB	668084WW	668076WW
IVW	668115WW	668077WW

Tetric PowerFlow

Shade	Syringe (1x2g)	Cavifil (20x.2g)
IVA	692409WW	692413WW
IVB	692410WW	692414WW
IVW	692411WW	692415WW

Shade Guides

Item	Product Code
Tetric PowerFill/Tetric PowerFlow	668082WW
Tetric Prime	709578WW
Tetric EvoFlow	595952WW

Do you know our clinical accessories?

Our clinical accessories also allow you to perform efficient treatment procedures – from relative isolation and time-saving contouring to high-gloss polishing in just one step.

OptraGate

Our latex-free lip and cheek retractor for easy moisture control
www.ivoclar.com/optragate



OptraSculpt

Efficient contouring due to non-stick properties
www.ivoclar.com/optrasculpt



OptraGloss

High-gloss polishing of composites in just one step with OptraGloss
www.ivoclar.com/optragloss



Learn more about our Tetric Line:
www.ivoclar.com/tetric-line

Direct restoratives for efficient esthetics

Our well-coordinated products for direct restorative procedures enable you to efficiently create high-quality, esthetic restorations.



Isolate

Comfortable isolation with OptraGate and OptraDam



Bond

Efficient bonding with the Adhese Universal VivaPen



Restore

Tetric Line – the solution for all cavities



Contour

Easy adaptation of materials with OptraSculpt



Cure

High curing performance delivered by Bluephase polymerization lights



Polish

Lustrous surfaces produced with OptraGloss



Protect

Effective prevention with Fluor Protector S