

The image shows a close-up of the Ivoclar PrograScan PS7 dental scanner. The device is white with a prominent green light source. Two dental models are mounted on the scanner's tables. The Ivoclar logo is visible on the top of the device.

ivoclar

Simultaneous  
high speed  
for perfection

PrograScan<sup>®</sup> PS7

One click.  
Two tables.  
Three times as quick.

Making People Smile

# Simultaneous scanning. Faster in the lab.

Got a busy dental lab? Then our PrograScan® PS7 is just right for you. We have developed this high-end lab scanner for all dental labs to handle increasing production volumes even faster than before.

The trick is: The scanner captures upper and lower jaw models simultaneously. Just two minutes later, the digital models are ready in the design software. Compared to sequential scanning, this results in significant time savings.

PrograScan® PS7 and PS5: maximized degree of automation, simple operation, high process reliability and precise results



One click

- ✓ Starts the workflow from scan to design
- ✓ Minimal user interaction

Two tables

- ✓ For simultaneous scanning
- ✓ Automatic accessory detection

Three times as quick

- ✓ Upper and lower jaw models at the same time
- ✓ 3D models in only 2 minutes



# Technically thought through. Future made for you.

Two scan tables, two optical light units, eight cameras and other sophisticated components characterize the PrograScan® PS7.

Furthermore, the scanner seamlessly integrates into our digital Ivoclar workflows.

Compatible  
with exocad  
DentalCAD

## Future-proof technology concept and sophisticated components:

- ✓ 8 cameras (8 Mpix each)
- ✓ 2 optical light units
- ✓ 2 scan tables
- ✓ 5 µm accuracy
- ✓ White LED light
- ✓ Colour texture

Dimensions: 396.0 × 436.5 × 380.5 mm



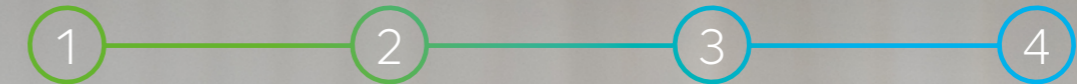
### Minimum user interaction

Any accessories are detected automatically; the scan job is performed in one single process.

# Intuitive. Logical. Precise. Design digitally.

Design, edit and refine your digital models with the proven exocad DentalCAD software. It reflects your analog working environment so that you can find your way around quickly and intuitively.

It's that easy:



1 Scan simultaneously using the PrograScan PS7

2 Select individually from tooth and material libraries

3 Create customized results with automated design proposals

4 Produce and finalize

## For newcomers and experts:

- ✓ Easy to learn
- ✓ Intuitive user interface
- ✓ Wizard-guided workflows
- ✓ Versatile applications
- ✓ Extended tooth and material libraries
- ✓ Open software structure
- ✓ Flexible additional functions and tools

The expert mode of exocad DentalCAD allows you to customize your settings and access numerous additional functions and tools.

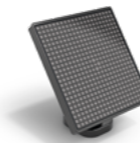
# Every tool so cool.

Selected tools designed for the PrograScan® PS7 enable more efficient workflows that require even fewer interactions than before. A similarly streamlined process applies to the articulator: Synchronize the articulator with the scanner and perform the complete scanning process straight away.

Get your job done.  
Fully automatic.

- ✓ All tools and accessories are automatically detected.
- ✓ The scanner automatically starts the associated process.

## Accessories at a glance



**Calibration body autodetection**  
The high-precision glass body is used to re-calibrate the scanner.



**Articulator base autodetection**  
Base for placing an articulator in the PrograScan scanner.



**Impression holder autodetection**  
Holder for reliable impression scanning.



**Model mounting screw system autodetection**  
Holder for the firm mounting of plaster models.



**Model mounting Blu Tack autodetection**  
The model holder with Blu Tack is an alternative to the model mounting screw system and is used for scanning impressions and plaster models.



**Multi-die holder (9) autodetection**  
Multi-die holder for scanning up to 9 single dies.



**Multi-die holder (14) autodetection**  
Multi-die holder for scanning up to 14 single dies.



**Quarter tray holder autodetection**  
With the quarter tray adapter, partial upper and lower models and up to four dies can be scanned simultaneously.

**PC workstation – High Performance**  
High-performance PC (without monitor, keyboard, mouse), optimized for the use of exocad DentaCAD.

**SplitCast holder autodetection**  
With the aid of the optional SplitCast adapters, the bite registrations of the most popular articulators can be transferred to the software automatically, correctly and without loss of precision.



**Adesso SplitCast holder autodetection**



**SAM/Axio SplitCast holder autodetection**



**Protar SplitCast holder autodetection**



**Quicksplit SplitCast holder autodetection**



**Articulator calibration object**  
Centering key to transfer the model's position from physical articulator to virtual articulator in the CAD software.



**Model fixator rod**  
The model fixator rod is compatible with the model holder and secures the models firmly and reliably in occlusion.

# Treat yourself to something special. More time.

With the PrograScan PS7, you can work even faster, more efficiently and more productively than ever before. And be at the cutting edge of technology. Valuable components, a high degree of automation and open data interfaces make the PrograScan PS7 an essential part of your lab. Moreover the scanner seamlessly integrates into our digital and proven Ivoclar workflows, such as Digital Denture and Zirconia Restorations. In this way, you gain the most precious asset of all: more time.

## Versatile applications:

- ✓ Crowns
- ✓ Bridges (3-5 units)
- ✓ Long-span bridges
- ✓ Implants
- ✓ Bite splints
- ✓ Removable prosthetics

## Technical Data

Camera	8 (8 Mpix each)
Scan tables	2
Auto-start	Yes
Accuracy (ISO 12836)	5 $\mu$ m
Repeatability	<2 $\mu$ m
Texture	Colour
Scan strategy	All-in-one /die in model
Output format	STL, PLY
Voltage range	100-240 VAC
Frequency range	50-60 Hz
Rated power (max.)	90 W
Scanner voltage	24 VDC $\pm$ 10 %
Type of USB port	USB 3.0 Typ C (5 Gbit/s)
Number of USB ports	2
Weight	13.6 kg
Dimensions (W $\times$ H $\times$ D)	396.0 $\times$ 436.5 $\times$ 380.5 mm

# Digital Denture – The fast, predictable process



## Consult

IvoSmile is an augmented reality app for visualizing the patient's dental makeover on an iPad or iPhone.



## Scan and design

The high-end lab scanner PrograScan PS7 scans upper and lower jaw models in one process: simultaneous and fully automatic.



## Select

Ivation is a monolithic solution for the fabrication of dentures in only one uninterrupted milling cycle without bonding.



## Produce

PrograMill PM7 is a powerful milling machine that combines big data, material competence and software to produce high-precision dentures.



## Protect

Cervitec Gel helps patients maintain their oral health – so they can enjoy their removable dentures for longer.