

Effortless dental masterpieces

IPS Empress® Direct

The highly esthetic composite



The composite for highly esthetic fillings

IPS Empress® Direct is our highly esthetic, sculptable composite for anterior and posterior teeth. We specially developed it to fulfil the highest esthetic demands.

Our aim is to unlock your inner creativity.

More than
44 million
fillings have
been placed^[1]



Lifelike shades for natural-looking restorations

IPS Empress Direct materials come in a wide range of true-to-nature shades and five different levels of opacity/translucency, which allow you to imitate the individual characteristics of natural teeth.



A long-lasting smile

IPS Empress Direct has outstanding clinical and esthetic properties. More than 44 million^[1] restorations have been placed with the composite, which translates to extensive experience with the material.



Convenient handling and intuitive application

The composite is convenient to use and easy to sculpt and contour. The material has a long working time, and it quickly polishes to a high gloss.



[1] Based on sales figures.

Lifelike shades for natural-looking restorations

IPS Empress Direct® is almost as multi-faceted as natural teeth. Lifelike shades and levels of translucency and opacity allow you to faithfully reproduce the different anatomical layers of teeth as well as any individual characteristics.

Tip:

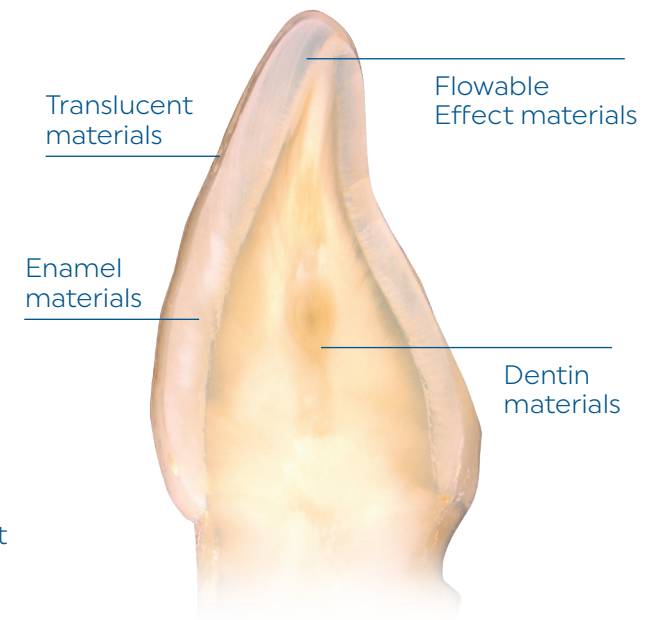
Use our colour-stable, autoclavable shade guides to achieve precise shade matching results.

Intuitive shade system

IPS Empress Direct features dentin and enamel materials. Dentin materials are used to replace natural dentin and Enamel materials to reproduce natural enamel.

The Dentin materials have true-to-nature opaque properties and therefore influence the overall shade from within the tooth. The Enamel materials have a higher translucency and therefore allow light to diffuse naturally through the Dentin materials.

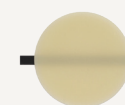
Three translucent materials, Trans 20, Trans 30 and Trans Opal, are available for controlling light reflections in the incisal region.



- ✓ 13 Dentin shades
- ✓ 16 Enamel shades
- ✓ Trans 20, Trans 30 and Trans Opal for incisal areas

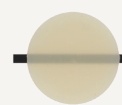
Masking properties

Dentin A2



7-8%

Enamel A2



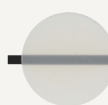
13-15%

Trans 20



20%

Trans 30



30%

Trans Opal



45%

Sample values, Technical Data Sheet, Ivoclar Vivadent AG

Play of light

Unlock your inner creativity

You can customize all of your restorations in great detail with the flowable characterization materials IPS Empress® Direct Effect, IPS Empress® Direct Opaque and IPS Empress® Direct Color.

They are simply applied just under the final covering layer.

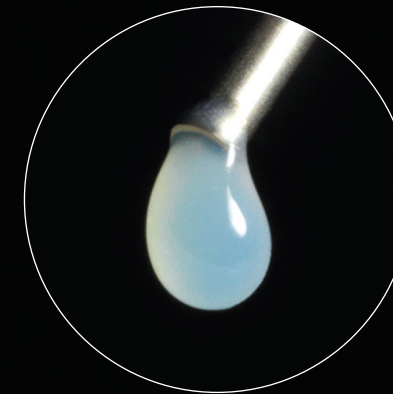


Easy application of nuances with Trans Opal

The opalescent effect of dental enamel manifests itself in a bluish, translucent appearance of the incisal edge.

The special Trans Opal material allows you to faithfully reproduce this opalescent effect in just one step. In reflected light the material has a bluish tinge, while in transmitted light it has a reddish-orange appearance – exactly as it should be for natural-looking results.

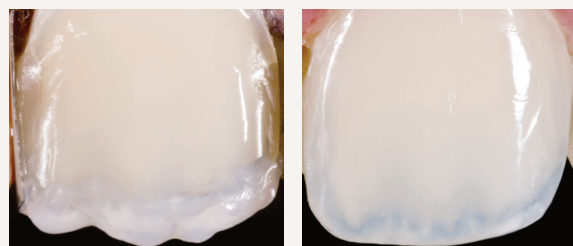
Reflected light



Transmitted light

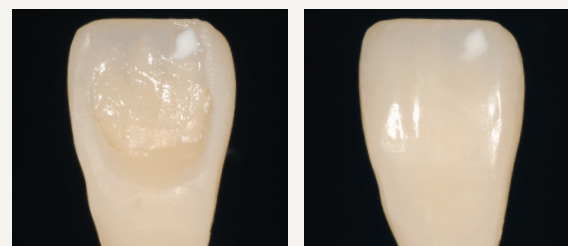


Accentuation of mamelons and application of opalescent effects with IPS Empress Direct Effect Trans Opal



Photos: Dr Eduardo Mahn, Chile

Application of fluorosis marks with IPS Empress Direct Color white



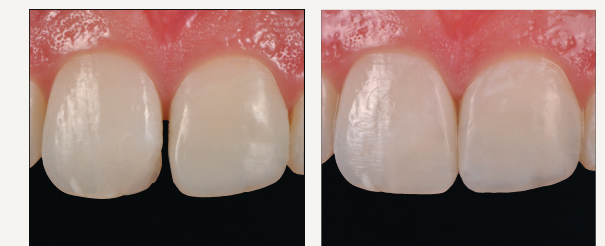
Photos: Dr Markus Lenhard, Switzerland

Imitation of enamel cracks with IPS Empress Direct Color ochre and brown



Photos: Dr Anton Lebedenko, Ivoclar, Liechtenstein

Closing of a diastema and creation of an opalescent effect using IPS Empress Direct Enamel and IPS Empress Direct Trans Opal



Photos: Dr Eduardo Mahn, Chile

A long-lasting smile

IPS Empress® Direct is a market-leading, highly esthetic dental composite. Studies have shown that the material maintains its esthetic appearance for a very long time.

Clinically proven

More than 44 million fillings^[2] have been placed, and beaming patients around the world are proof of the outstanding esthetics and high quality of IPS Empress Direct. Furthermore, a clinical trial^[3] has confirmed the excellent performance of the restorations after five years in service. After this time, the colour match of 70 percent of the restorations was deemed clinically excellent or good and the remaining 30 percent were considered satisfactory.

[2] Based on sales figures.

[3] Cerutti A, Study Report, University of Brescia, 2015.



"I've been working with IPS Empress Direct for many years. I'm impressed by the versatile characterization options and above all by the excellent esthetic properties and the high quality of the restorations, even after many years in service."

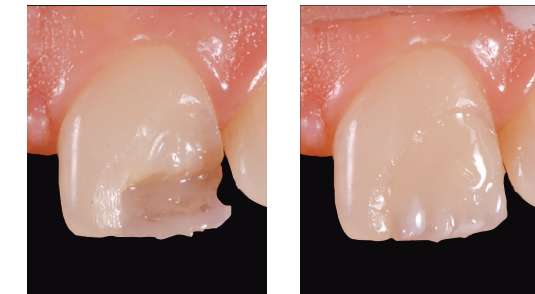
Dr Eduardo Mahn
Clinica Artis, Universidad de los Andes,
Santiago, Chile

The case of a 24-year-old-patient shows that the esthetic result remained constant over a period of eight years. Very little wear occurred.

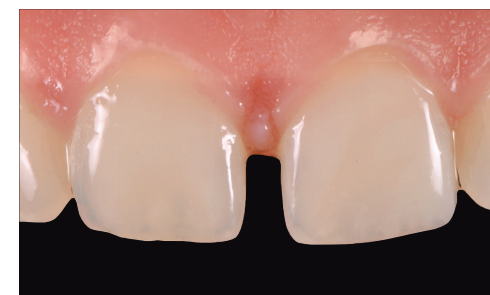
Starting situation, 2015



Build-up of the palatal wall / of the dentin core



The result



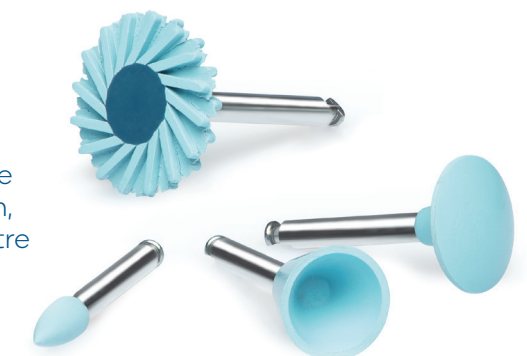
Recall examination after eight years, 2023



Photos: Dr Eduardo Mahn, Chile

Lasting high gloss

OptraGloss® allows you to polish IPS Empress Direct restorations to a high gloss in one step. Because of the optimal filler particle size distribution, the restoration surface retains its lustre for a long time.

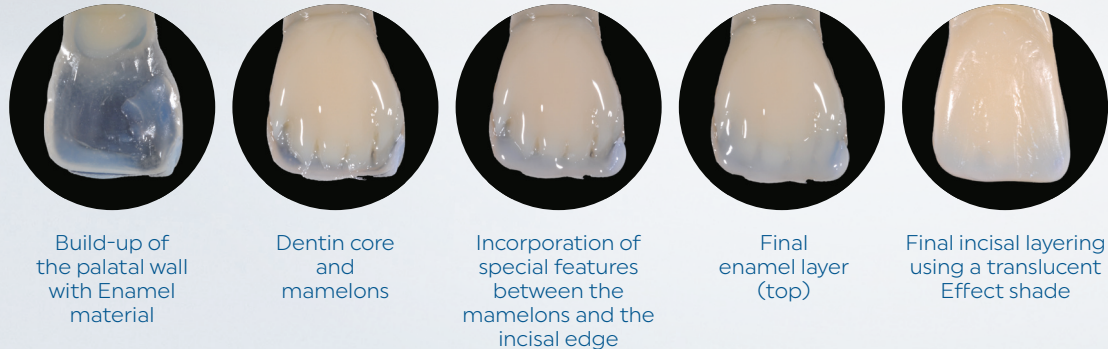


Convenient handling and intuitive application

Easy handling of IPS Empress Direct:

- ✓ Intuitive shade system simplifies handling
- ✓ Shape is maintained during sculpting and contouring
- ✓ Good adaptation to cavity walls and reduction in the risk of marginal gap formation
- ✓ Less pressure on the practitioner because of a long working time of up to 300 seconds^[4]
- ✓ Quick polish to a lasting high gloss
- ✓ High radiopacity of up to 360% AI

Only a few steps to lifelike, vibrant restorations:



Photos: Dr Eduardo Mahn, Chile

Delivery forms

Refills

Dentin

Shade	Cavifils(10x0.2g)	Syringe (1x3g)
A1	627258AN	627220AN
A2	627259AN	627221AN
A3	627260AN	627222AN
A3.5	627623AN	627624AN
A4	627261AN	627223AN
B1	627264AN	627226AN
B2	627265AN	627227AN
C3	627266AN	627228AN
D2	627267AN	627229AN
IVA5	627262AN	627224AN
IVA6	627263AN	627225AN
Bleach L	627268AN	627230AN
Bleach XL	627269AN	627231AN

Enamel

Shade	Cavifils(10x0.2g)	Syringe (1x3g)
A1	627270AN	627220AN
A2	627271AN	627333AN
A3	627272AN	627234AN
A3.5	627273AN	627235AN
A4	627274AN	627236AN
B1	627275AN	627237AN
B2	627276AN	627238AN
B3	627277AN	627239AN
B4	627278AN	627240AN
C1	627279AN	627241AN
C2	627280AN	627242AN
C3	627281AN	627243AN
D2	627282AN	627244AN
D3	627283AN	627245AN
Bleach L	627284AN	627246AN
Bleach XL	627285AN	627247AN

Translucent

Shade	Cavifils(10x0.2g)	Syringe (1x3g)
Trans 20	627286AN	627248AN
Trans 30	627287AN	627249AN
Trans Opal	627288AN	627250AN

Flowable consistency

IPS Empress Direct Effect

Shade	Syringe (1x 1.8g) with 5 tips each
Trans Opal	635342AN

IPS Empress Direct Opaque


Shade	Syringe (1x 1.8g) with 5 tips each
Opaque	637897AN

Effect Shades

IPS Empress Direct Color

Shade	Syringe (1x1g) with 5 tips each
White	637899AN
Honey	637900AN
Blue	637901AN
Ochre	637903AN
Brown	637904AN
Grey	637905AN




SCAN NOW
 to see tips and tricks from Dr Eduardo Mahn

[4] Under optimum light conditions.

Direct restorative procedures for efficient esthetics

Harness the power of our coordinated products for direct restorative procedures to create high-quality esthetic restorations efficiently.



Isolate

Comfortable relative isolation with OptraGate®



Bond

Efficient bonding with the Adhese® Universal VivaPen



Restore

Highly esthetic fillings placed with IPS Empress® Direct



Contour

Effortless contouring with OptraSculpt®



Cure

Powerful performance with Bluephase® PowerCure



Polish

Shiny surfaces with OptraGloss®



Protect

Effective prevention with Fluor Protector S

United States: Ivoclar | 175 Pineview Drive | Amherst | New York 14228
716-691-0010 | 800-533-6825 | Fax: 716-691-2285

Canada: Ivoclar | 1 - 6600 Dixie Road | Mississauga | Ontario L5T 2Y2
905-670-8499 | 800-263-8182 | Fax: 905-670-3102

[ivoclar.com](https://www.ivoclar.com)